

PEGASUS* Collaborative Robot Cart by AWG

PROVIDING SOLUTIONS FOR A BETTER TOMORROW

Finding skilled welders is challenging across all industries. Automation is usually the best solution and the most practical and cost-effective answer. We combined more than a half-century of welding knowledge, gas expertise, and over 500 automation installs with your real-world needs to create the AWG Cobot Cart. It is designed for safe, direct human interaction. Take your business to the next level with this affordable, innovative solution.

Features

- Powerful and precise, the ultra-compact YRC1000micro controller minimizes installation space and optimizes performance. Its small footprint and lightweight cabinet are ideal for factories with high-density layouts, where stacking of controllers may be required.
- With the AWG Cobot, we give you options because we know that not every customer has the exact same cookie-cutter needs. Our cobot can work with your own welding power source, or we can pair it with the premier Fronius power source. We also can customize it for push-pull applications.
- The AWG Cobot backed by the Yaskawa YRC1000 controller & micro controller are the only one on the market to offer an external axis positioner giving you an optional 7th axis.
- The six-axis HC10DTP collaborative robot enables operation with, or in close proximity to human workers. Precision hand-guiding facilitates easy programming for fast implementation of the robot system, while a pinch-less design featuring Power and Force Limiting (PFL) technology constantly monitors force to quickly react to contact.



KEY BENEFITS

Fast and easy setup for many weld jobs. Easily trainable robot for programming different welding projects.

APPLICATION

Arc Welding

American Welding & Gas Automation Division

2629 Rand Road
Indianapolis, IN 46241

Contact your local territory
manager for more information.

AWG Pegasus w/ MICRO controller (no welder)*

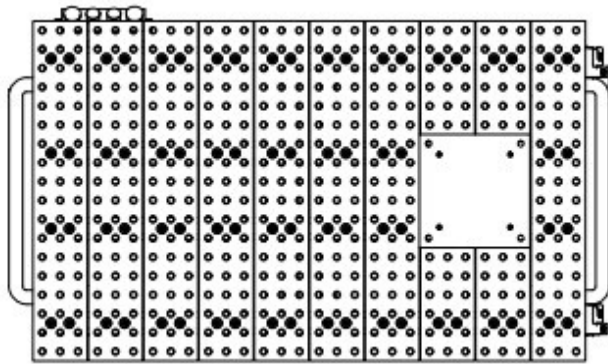
Already have a welder? We can incorporate your existing welder with our cobot. We provide you with a state of the art American Torch Tip gun with three different power pins— Lincoln, Tweco & Miller

*Patent pending. 2023

Various jig and fixture kits are also available if the standard 78pc kit doesn't meet your needs. Many other options available... please inquire.

SPECIFICATIONS

Cart dimensions: 5' x 3' x 3'6"



Robot

HC10DTP

Collaborative Robot with Hand-Guided Teaching. It has a 47 inch (1200mm) horizontal reach.

YRC1000 Micro Controller

Powerful and precise, the ultra-compact YRC1000micro controller minimizes installation space and optimizes performance. Its small footprint and lightweight cabinet are ideal for factories with high-density layouts, where stacking of controllers may be required.



YRC1000 Micro Controller w/ smart pendant

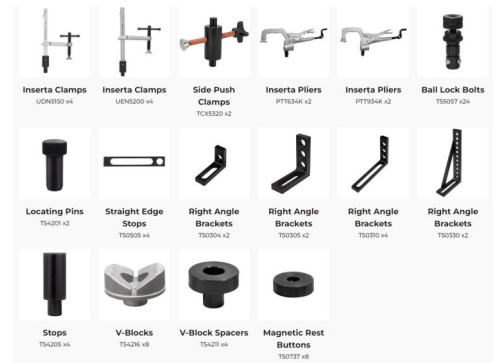
- Ultra-Compact, Industrial Robot Controller. Enhanced ergonomic and lightweight design.
- Several user levels, including OPERATOR and SAFETY MODE.
- Touch screen user interface enables fast and easy programming.
- Provides ability to evaluate 3D simulation of robot motion on screen before or during robot execution.
- Specific display options for general purpose applications; includes built-in help function. USB connection allows service staff to directly connect for remote service purposes.
- SD card slot enables easy transfer of job programs.



- 3-position enable switch in compliance with DIN EN ISO 1021 8-1.
- Smart Pendant- Intuitive and powerful pendant interface that requires minimal upfront robotics training.

Heavy-Duty industrial cart

- Large square footage of 5'x3' featuring boreholes on the top surface and feature patented self-locating and reversible table top plates.
- Nitrided tabletop finish
- Table Accuracy: Table flatness: ± 0.005 per 24" x 24", Hole spacing: 2.000 ± 0.001 , Hole diameter: $0.625 + .002 / - .000$, Plate thickness: 0.630 ± 0.004
- Designed to increase welding productivity through use of a fast, accurate, and easy to understand modular fixturing system. The patented plate + slot + hole system allows users to place clamps and components at any point on the tabletop as required for each unique fixturing project.
- Includes 78-pc. Fixturing Kit



**American Welding & Gas
Automation Division**

2629 Rand Road
Indianapolis, IN 46241

Contact your local territory manager for more information.